



INSTALLATION GUIDE

INTEGRATED PRINTING

LogTrade

2020-01-13





1 GENERAL

To enable high speed automated printing of package labels, waybills and other documents LogTrade Technology has developed a printing software called *LogTrade Integrated Printing*, running as a Windows service. This software is installed on any computer (server or work station) that has access to the printers that should be used.

A printing station is normally a combination of a label printer and a laser A4 printer but can be limited to only one of them is applicable in your setup. Each printing station is called a *print queue* in LogTrade.

One print queue shall only be setup in one installation of *Integrated Printing*, that means that even if you have 10 different work stations that uses the same printers the software should only be installed once. If you have for example 3 different print queues you can decide to install the software on one central server and handle all three queues or install on up to 3 different computers that handles one queue each.

The activation and installation process can be done before or after the setup is done in Dynamics. If you have more than one print queue it is recommended to do the activation and setup in LogTrade first since Dynamics then takes advantage of the queues that are already setup then.

2 ACTIVATION

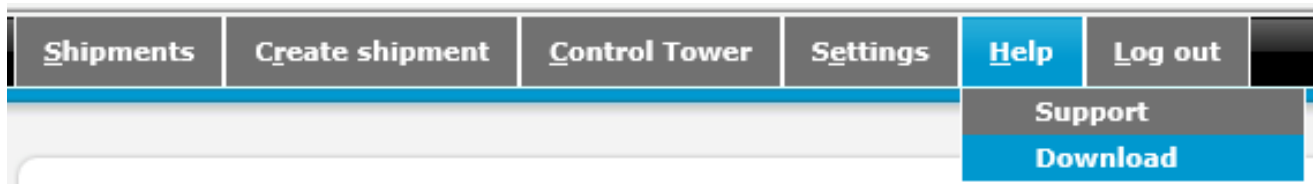
To open the LogTrade web portal you should login from the address www.logtrade.se.

Go to *Settings / System settings / Integrated Printing*. On the tab Settings you fill in the checkbox *Activate Integrated Printing*. By default, a print queue called *Standard* is already created. If you want more than one print queue it is recommended to delete this queue and create new queues with more descriptive names.

Print queue	Description
Standard	Standard

3 INSTALLING LOGTRADE PRINTER

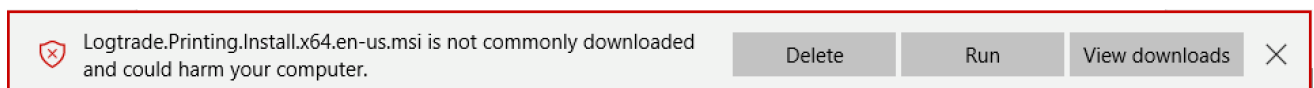
The next step is to install the LogTrade Printer. Before starting installation make sure you are *logged in on the computer with the user account that will run the Windows service for LogTrade Printer*. Choose Help -> Download on LogTrade web portal.



Choose the version that suits your operating system.

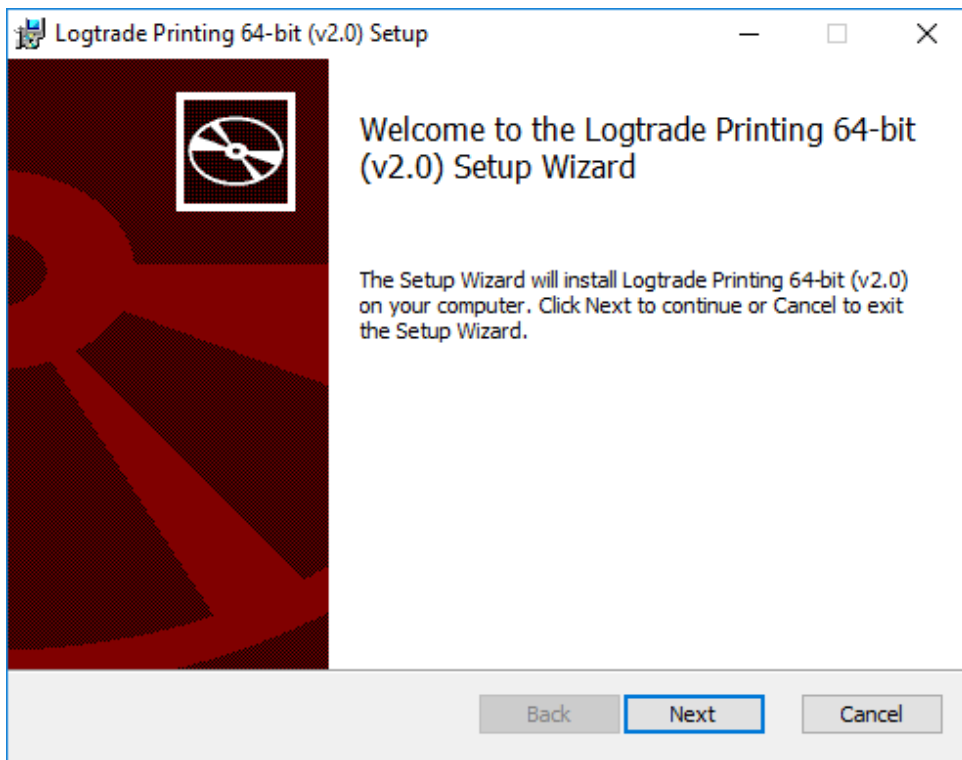


The following pictures shows the installation of LogTrade Printer executed from a web browser. The security related screenshots in the beginning might be different in various browsers. These screenshots are shown since the installation program is not signed and that is why Internet Explorer consider this as a potential security issue. It is not a security issue.



Choose *Run* to continue installation and the following dialog is shown.

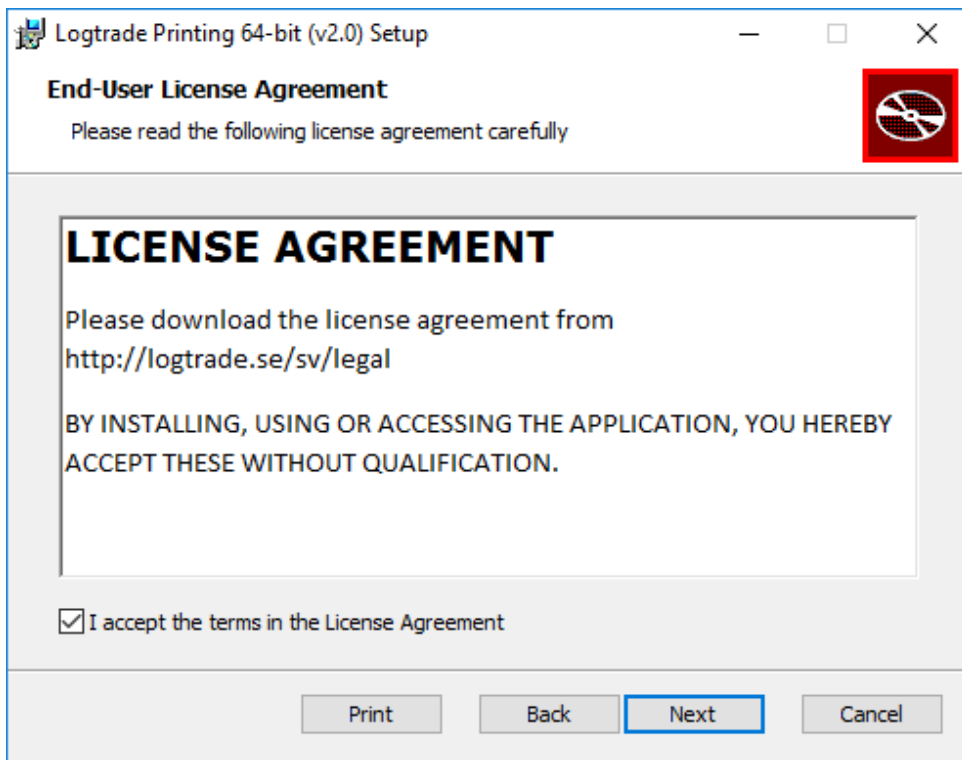
2,6
8 1/2



Click *Next*.



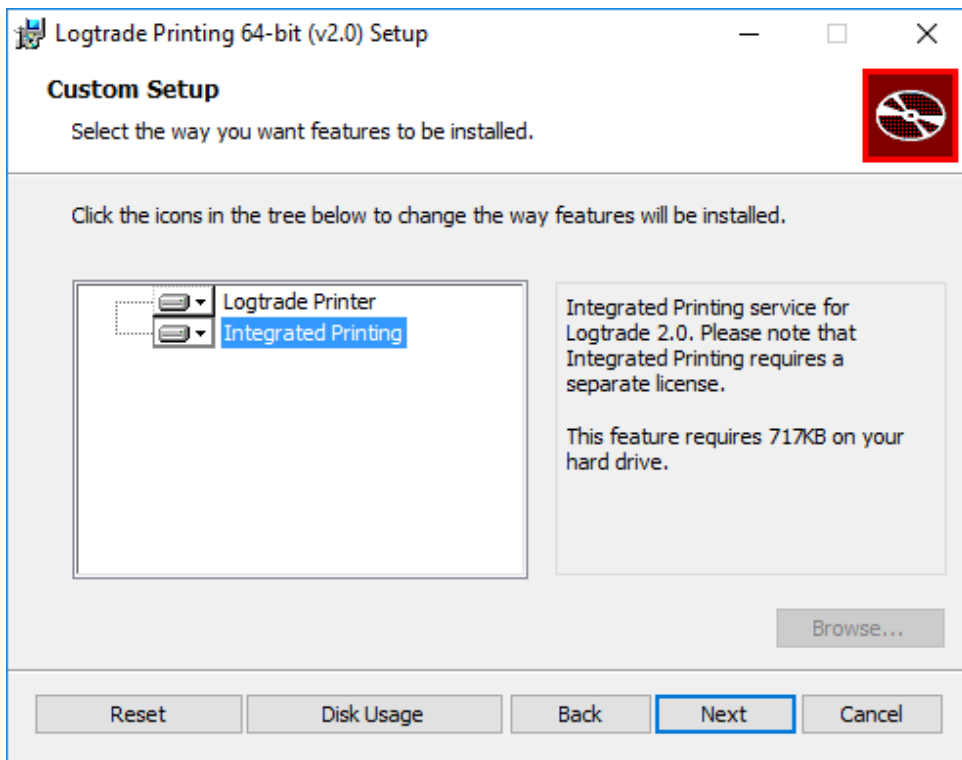
2,6
8 1/2



Accept the *license agreement* and click *Next*.



2,6
8 1/2



Make sure that you select *Integrated Printing* here and click *Next* to continue.

2,6
8 1/2

Logtrade Printing 64-bit (v2.0) Setup

Service account
Enter service account details.

Specify the logon account for the Integrated Printing service. This is the user you use to login with to setup printer settings.

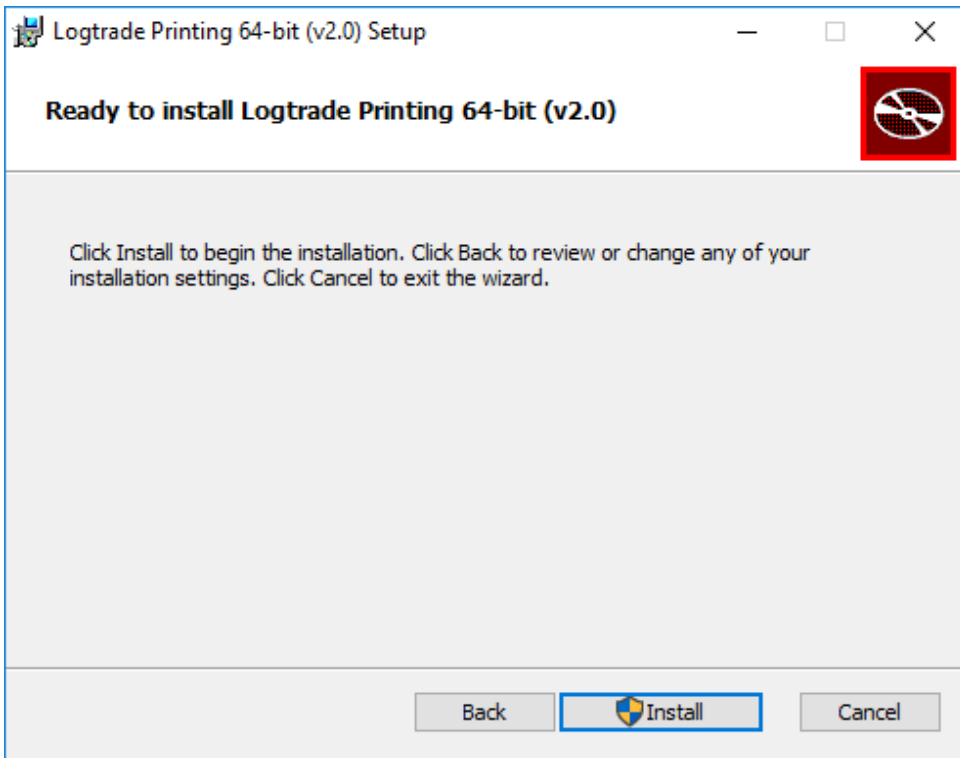
Account name (Example: domain\user or computername\user):

Password:

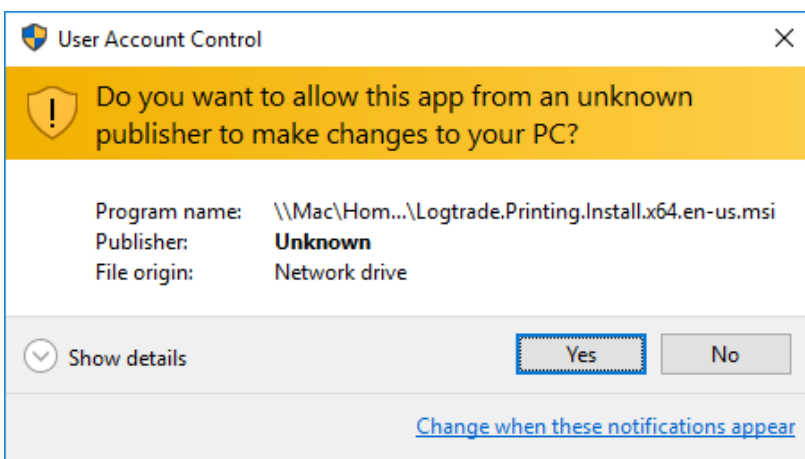
Please contact your network administrator for correct account settings.

Fill in login details. Make sure to be logged in as this user when doing installation and setup. Then click *Next* to continue.

2,6
8 1/2



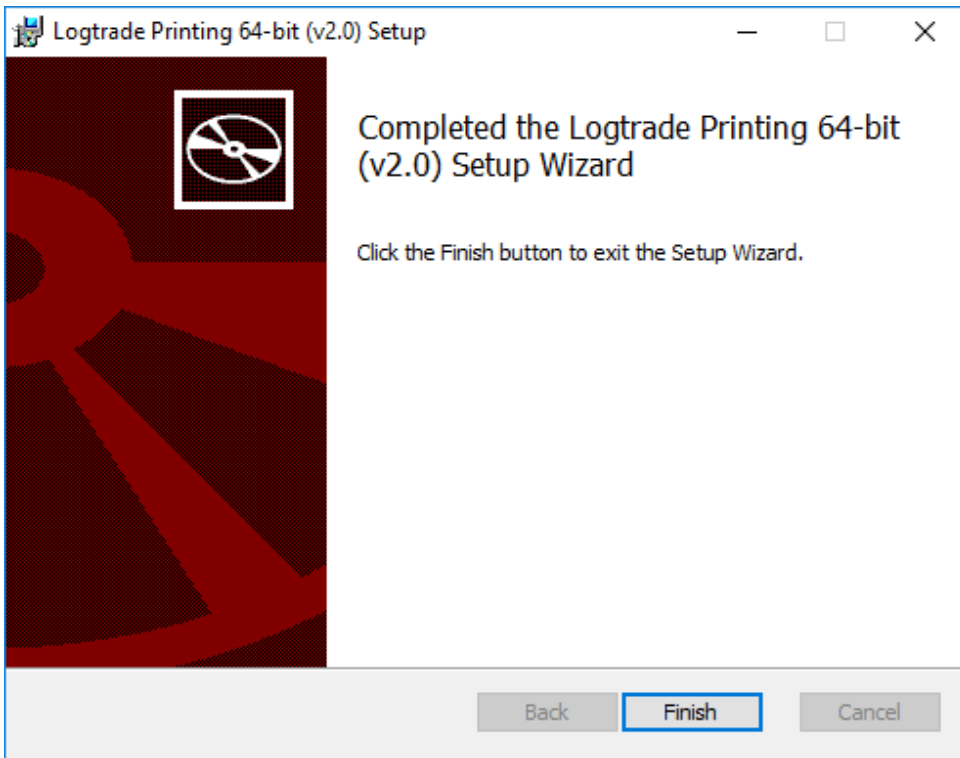
Click on *Install* to start the installation.



Click Yes if you are prompted by this message.



2,6
8 1/2

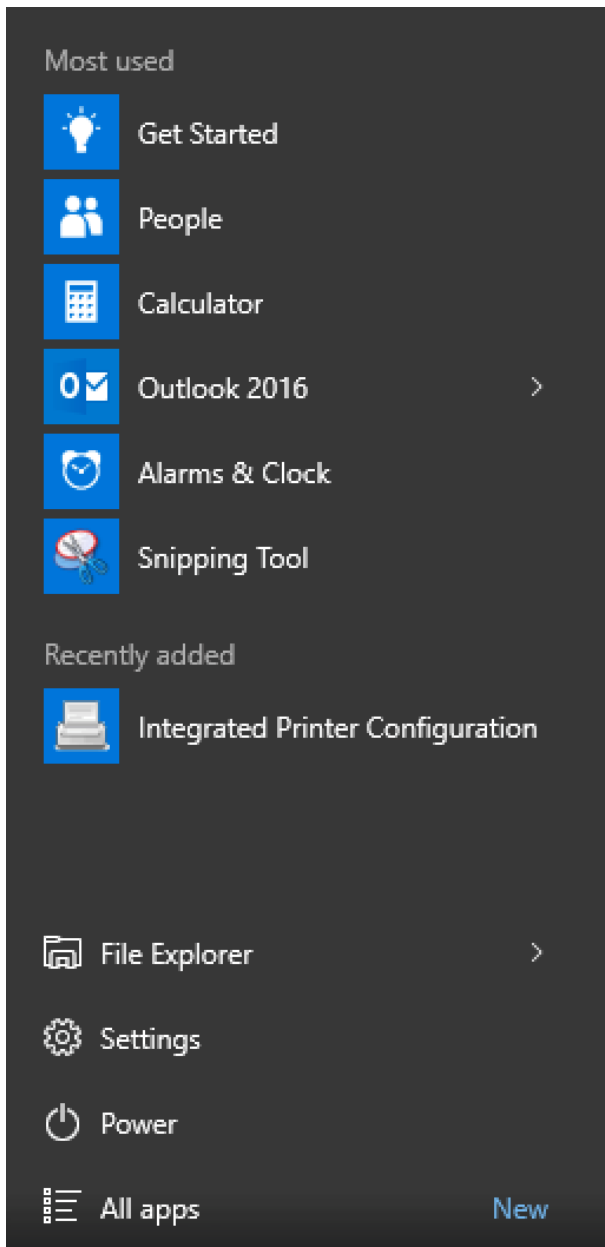


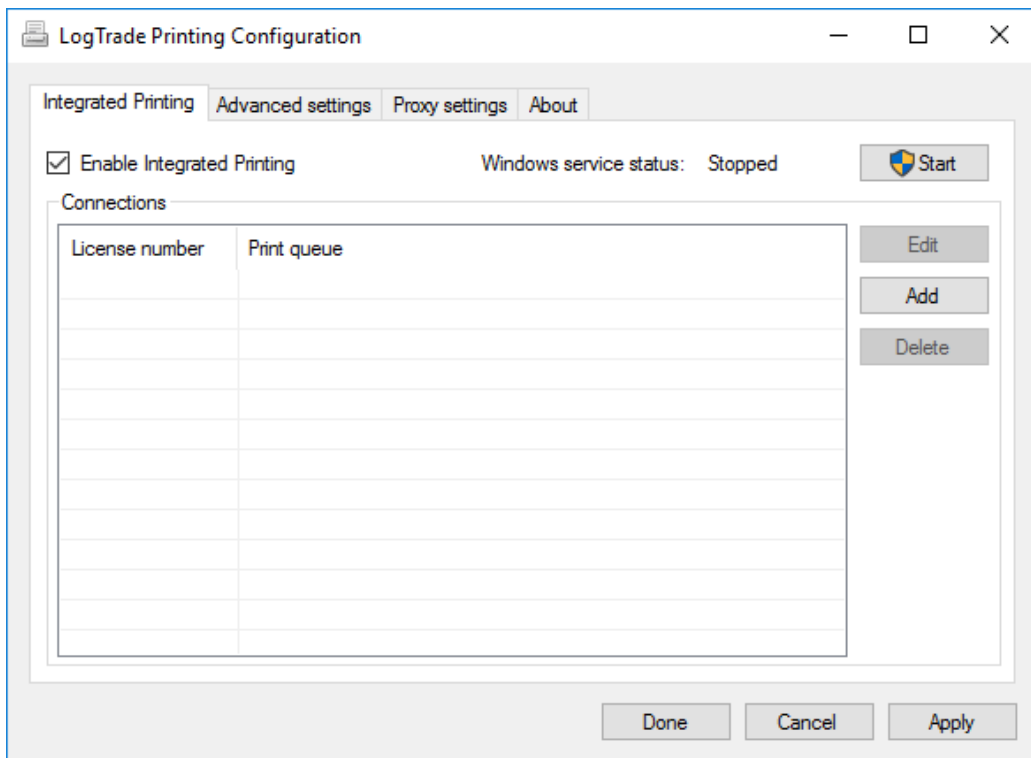
Click *Finish* and you are done.



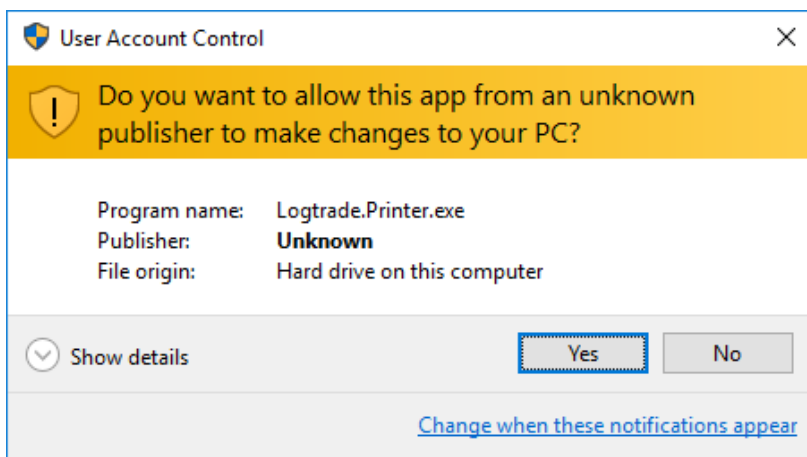
4 PARAMETER SETUP FOR INTEGRATED PRINTING

Open Integrated Printer Configuration from Windows Start Menu. Make sure you are opening "Integrated Printer Configuration" and NOT "LogTrade Printer".





LogTrade Printing Configuration is used to setup which printers that should be used for each *print queue*. Make sure to check *Enable Integrated Printing* and then click *Start* to start the Windows service.



Click *Yes* to continue configuration.

Click *Add* to start adding a new printer queue. Fill in your login credentials you have got from LogTrade and then click *Connect*. That will bring up possible *Print Queues* to select.





After you have chosen Print Queue you must select which printers to use for each document.

STD – Printer for waybills, CMR, invoices, delivery notes.

STE – Printer for package labels, normally a label printer.

STL – Printer for Manifest Lists. Often same printer as for STD.

STV – Not used for automated printing.

Integrated Printing

Connection settings

Use account settings for Logtrade 2.0

User

Password License number

Connection succeeded

Print Queue

Selected print queue

Printer settings

Name	Settings
STD	Windows default printer, Default paper bin, A4 plain paper
STE	Windows default printer, Default paper bin, STE label with r...
STL	Windows default printer, Default paper bin, A4 plain paper
STV	Select at print time, Default paper bin, A4 plain paper

For each printer name click *Edit* and select printer.



Printer Setup

Printer Setup

Name: STE - STE Label

Printer: Zebra LP2844-Z

Paper source: Default paper bin

Paper type: STE label with receipt

Comment: Standard label

X Offset: 0 mm

Y Offset: 0 mm

OK Cancel Apply

Choose printer and correct paper source, make sure you choose the correct label paper size. Then click *OK* to finish setup for each printer.

Integrated Printing

Connection settings

Use account settings for Logtrade 2.0

User: loginname@company.com

Password: ***** License number: LTD810xxxx Connect

Connection succeeded

Print Queue

Selected print queue: Standard - Standard

Printer settings

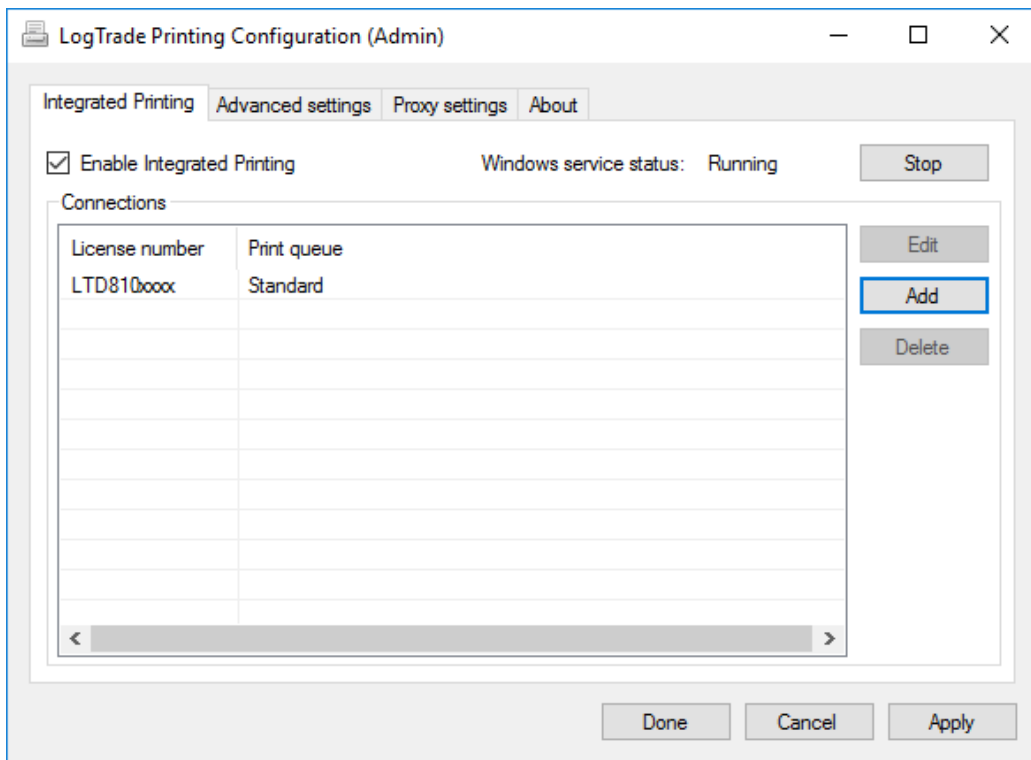
Name	Settings	
STD	Windows default printer, Default paper bin, A4 plain paper	Edit
STE	Windows default printer, Default paper bin, STE label with r...	Add
STL	Windows default printer, Default paper bin, A4 plain paper	Delete
STV	Select at print time, Default paper bin, A4 plain paper	

Done Cancel Apply

Click *Done* when completed.



2,6
8 1/2



Click *Done* to close the window.



5 STATUS ON PRINT QUEUES

To be able to see status for each Print Queue choose *Settings* -> *System Settings* -> *Integrated Printing* and then the page *Active print queues*. Here you can see if a print queue is connected or not.

Integrated Printing					
Settings	Active print queues	Logical printer names			
Connected clients					
Print queue	Client version	Local user	Connected	Waiting printjobs	Clear queue
Standard	2.0.12.0	LOGTRADESE\marwig		0	