



# DYNAMICS 365

## FINANCE AND OPERATIONS

# DELIVERY MODE MAPPING

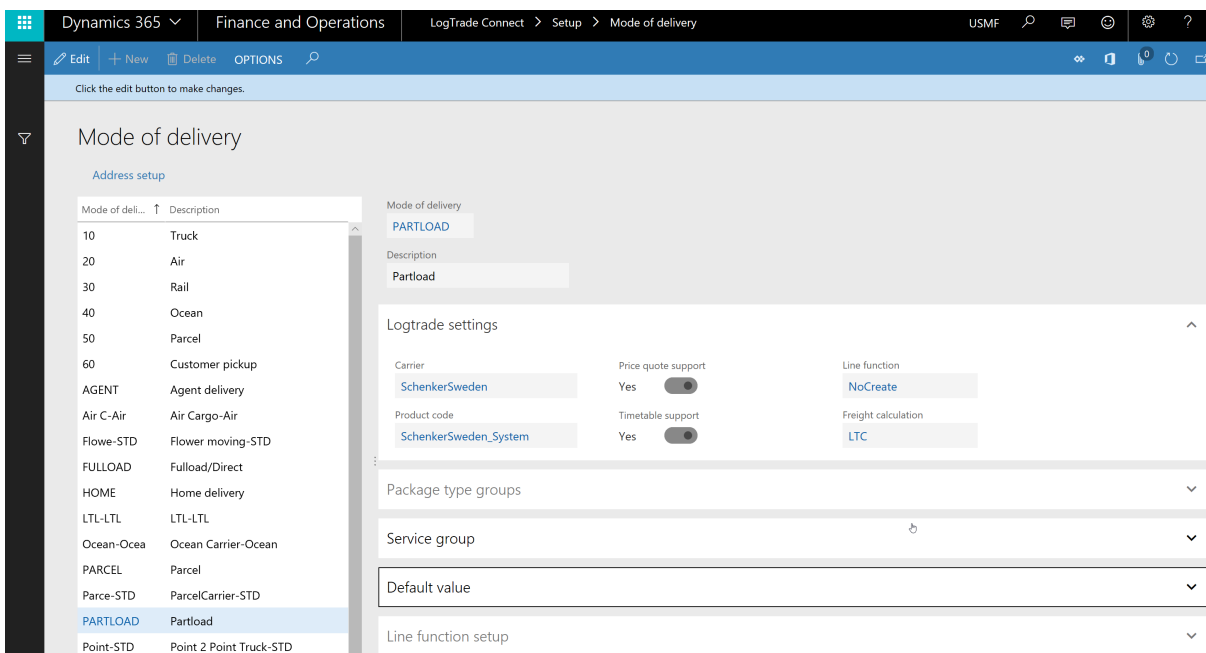
**LogTrade**

2018-12-07



# 1 GENERAL

*Delivery mode* mapping is a central part of the setup. It can be found under LogTrade Connect menu, but also from the *setup wizard*.



To the left you have all the *Mode of deliveries* that are defined in your system.

In this routine you will map a *Mode of delivery* (or short delivery mode) to a specific carrier and product.

Once the mapping is done, the two flip switches; *Price quote support* and *TimeTable support*, will be filled out based on the meta data that is collected from LogTrade API during the setup wizard.

These flip switches can be changed in the *delivery mode mapping* if you need to. They will control if corresponding buttons will be enabled in the Shipment form.





In the field *Line function* you can define which goods line creation routine will be triggered when creating a new shipment. You can read more about that below in that section below.

The field *Freight calculation* adds the possibility to develop your own freight calculation routine. Default there is one called LTC, which collects the price from the LogTrade API (only for carriers that support price quote), and adds it to the sales order with a percentage.

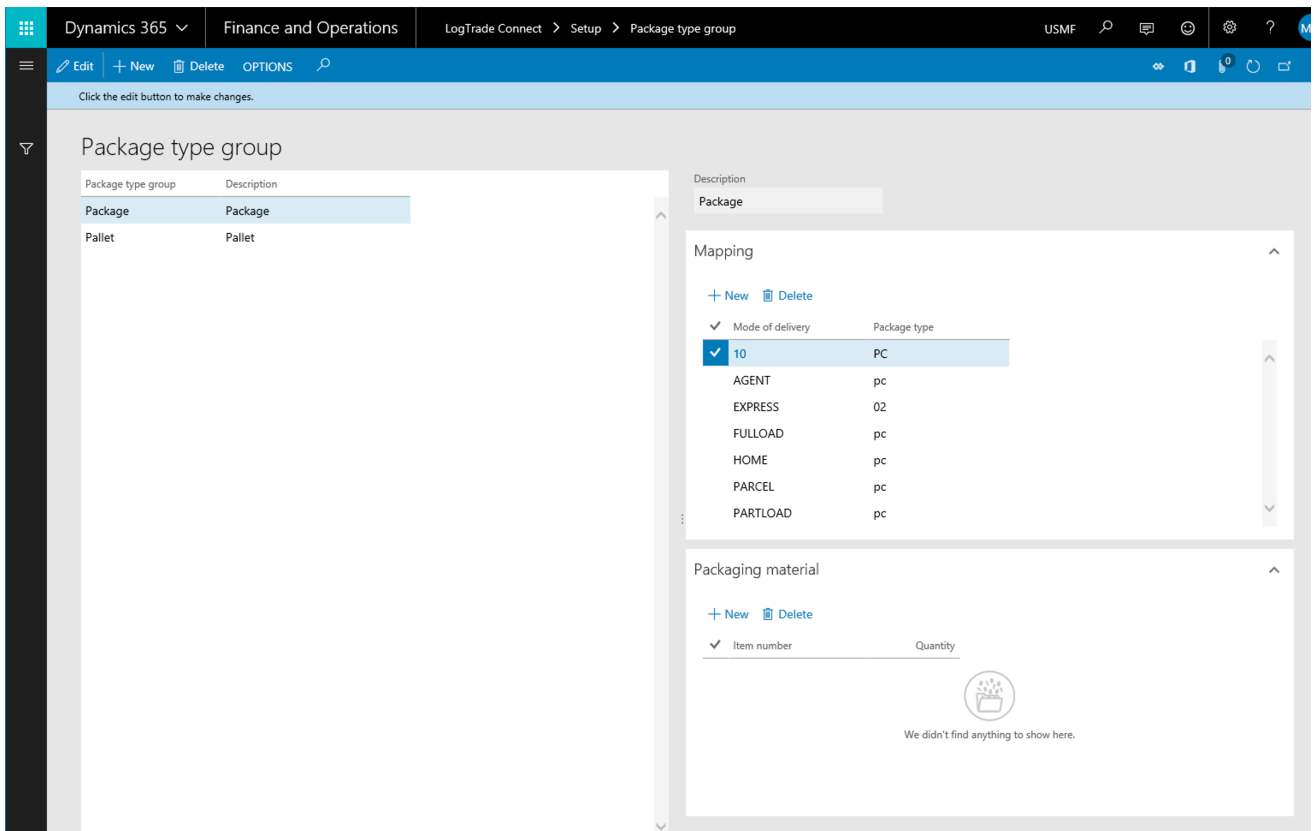
If you need your own price logic, you can develop it and select the routine here per *delivery mode*.

## 1.1 PACKAGE TYPE GROUPS

*Package type groups* are defined in the wizard and can also be defined in a separate setup form.

Once they are defined, you can map a *package group* to the chosen carrier's *package code*. This is done on the *Package type group* tab. (The mapping can also be done in the *package type group* setup form, but the *delivery mode* to carrier product mapping has to be completed first)

When working with shipment later you will work with the defined *package type groups*, and don't have to know the different carrier specific *package codes*.



## 1.2 SERVICE GROUPS

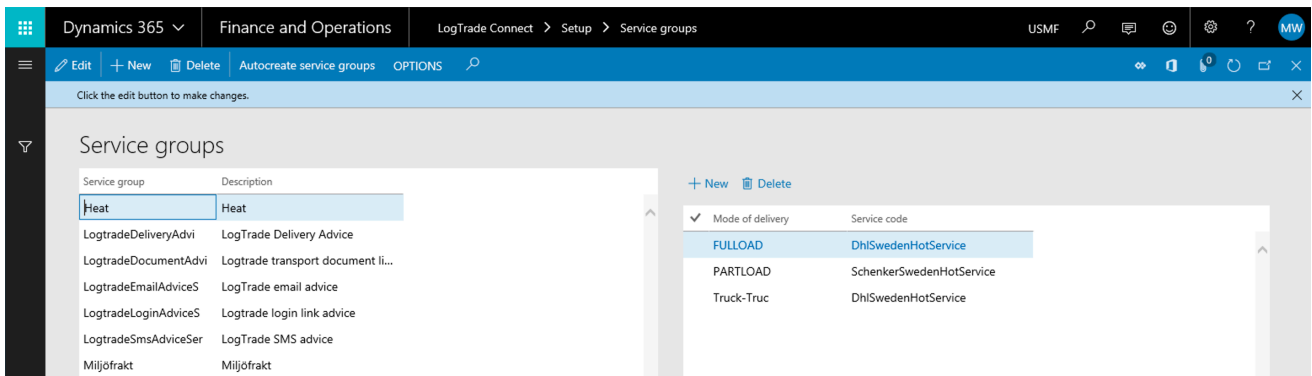
*Service groups* are a common defined name for a service. You can then map the *service group* to a carrier's specific *service code*.

The idea is to have common names for services (so we don't have to remember the carrier-specific codes) and also to have functions to automatically add services to shipments.

You will define the different *service groups* in a separate setup form, but here you can see the mapping for the selected carrier (carrier mapped to the *delivery mode*) and edit it.

LogTrade recommends doing the *delivery mode* to carrier product mapping in this routine and do the *service group setup* and mapping later in the *Service Groups setup* form. This allows for the system to autogenerate some *service groups*, if done in this order.

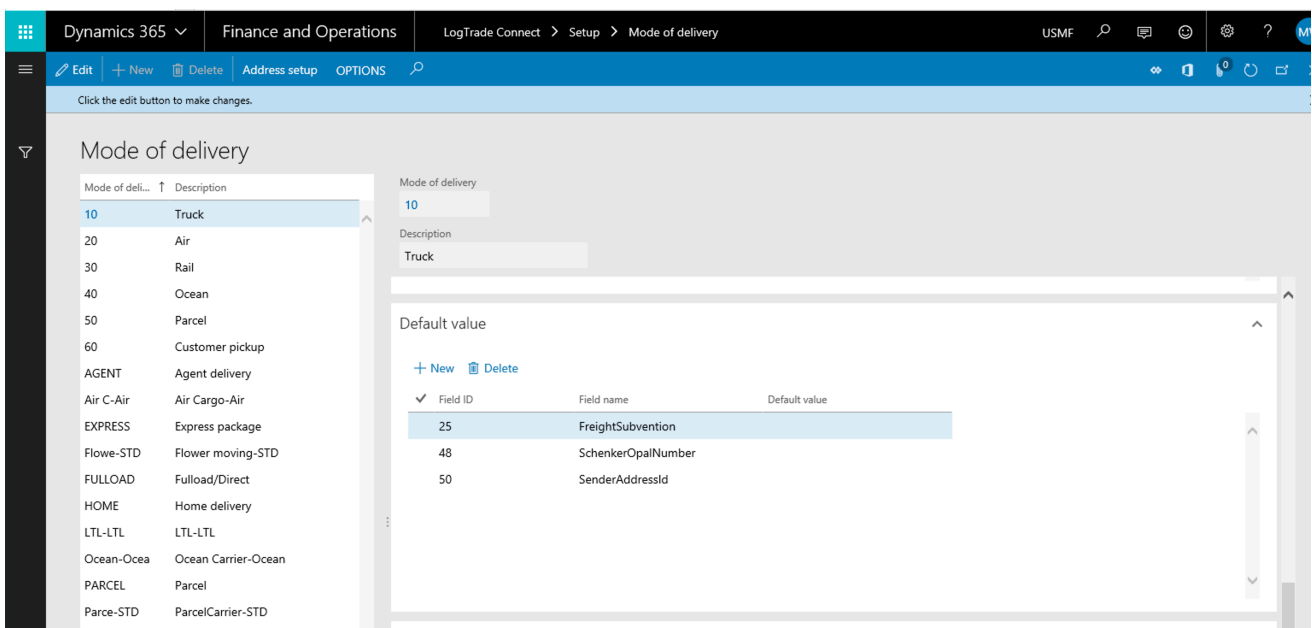




### 1.3 DEFAULT VALUE

We also have the ability to define some default values on shipment that are created with the selected *delivery mode*. This can be done on a defined set of fields only.

This is useful if you want to use a specific *sender address template* for a *delivery mode*.



### 1.4 LINE FUNCTION

In the field *Line function* you can define which *goods line* creation routine will be triggered when creating a new shipment. There are two options in standard, *NoCreate* and *AutoCreate*. *NoCreate* means that no goods line should be created on shipment creation, and *AutoCreate* means that





when creating a shipment, the system will automatically create *goods lines* that are defined for the selected *delivery mode*.

To define the *goods lines* for *AutoCreate*, look at the *Line function* setup tab in the *Mode of delivery* mapping form.

The screenshot displays the 'Mode of delivery' configuration page in Dynamics 365. On the left, a list of delivery modes is shown, with 'Truck' selected. The main area shows the details for 'Truck', including its description and a table of associated fields. Below this is the 'Line function setup' section, which contains a table defining goods lines for the selected mode.

Field ID	Field name	Default value
25	FreightSubvention	
48	SchenkerOpalNumber	
50	SenderAddressId	

Number of pack...	Package type group	Shipping marks	Goods description	Gross weight	Volume	Loading meters
1	Paket	Order	Material	100,00	1,00	0,00